

DUCKBILL®

Ground Anchor Systems

PROJECT REPORT

GROUND ANCHORING FOR TENNIS COURT COVERS

Over the last six years, the well proven Duckbill mechanical ground anchors have been successfully used to anchor a number of tennis court covers for Europe's leading manufacturer of relocatable structures, The Walter Group of Brumath, France.

The cost-effective Duckbill anchors provide a fast, efficient and reliable means of securing the structures and preventing any wind uplift.

Installation at all sites was quick, simple and effective, undertaken by WT Anchor Systems using a hand-held hydraulic breaker.



Garrison Tennis Club, Strasbourg, France

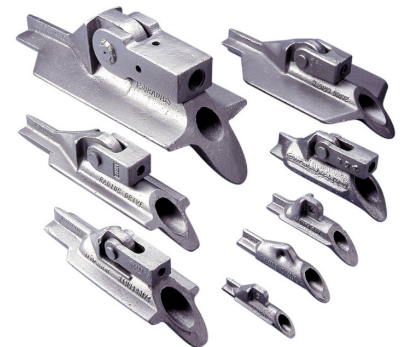
Structure: 36m span covering two courts

Ground: Sands and clays

Anchors: MR1's, 3m long with 20mm high yield bar

Quantity: 32

Load requirements: 80kN



The range of Duckbill mechanical ground anchors with the MR1 anchor pictured top right.

GROUND ANCHORING FOR TENNIS COURT COVERS

Over the last six years, the well proven Duckbill mechanical ground anchors have been successfully used to anchor a number of tennis court covers for Europe's leading manufacturer of relocatable structures, The Walter Group of Brumath, France.

The cost-effective Duckbill anchors provide a fast, efficient and reliable means of securing the structures and preventing any wind uplift.

Installation at all sites was quick, simple and effective, undertaken by WT Anchor Systems using a hand-held hydraulic breaker.



St Trojean Tennis Club, Ile d'Oreron, France (above and right)

Structure: 18m span over one court

Ground: Sand

Anchors: MR1's at the four corners; MR2's on the intermediate legs, all 3m long with 16mm high yield bars

Quantity: 16

Load requirements: MR1's - 80kN; MR2's - 40kN



Tennis court, Sourdeval, France (left)

Structure: 18m span over one court

Ground conditions: Stiff clay to gravels

Anchors: MR2's, 3m long with 16mm high yield bars

Quantity: 16

Load requirements: 40kN



The range of Duckbill ground anchors with the MR1 and MR2 pictured top right and centre left respectively

